

SoCo

Solidary Selective Collection and Inclusive Recycling Analysis Tool

CHALLENGE

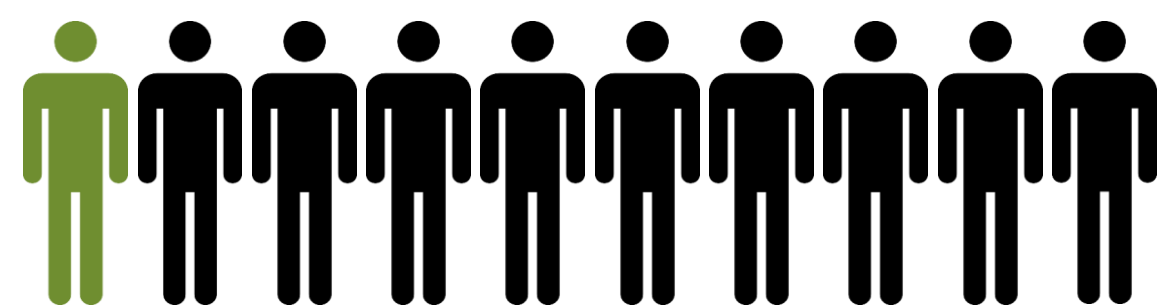
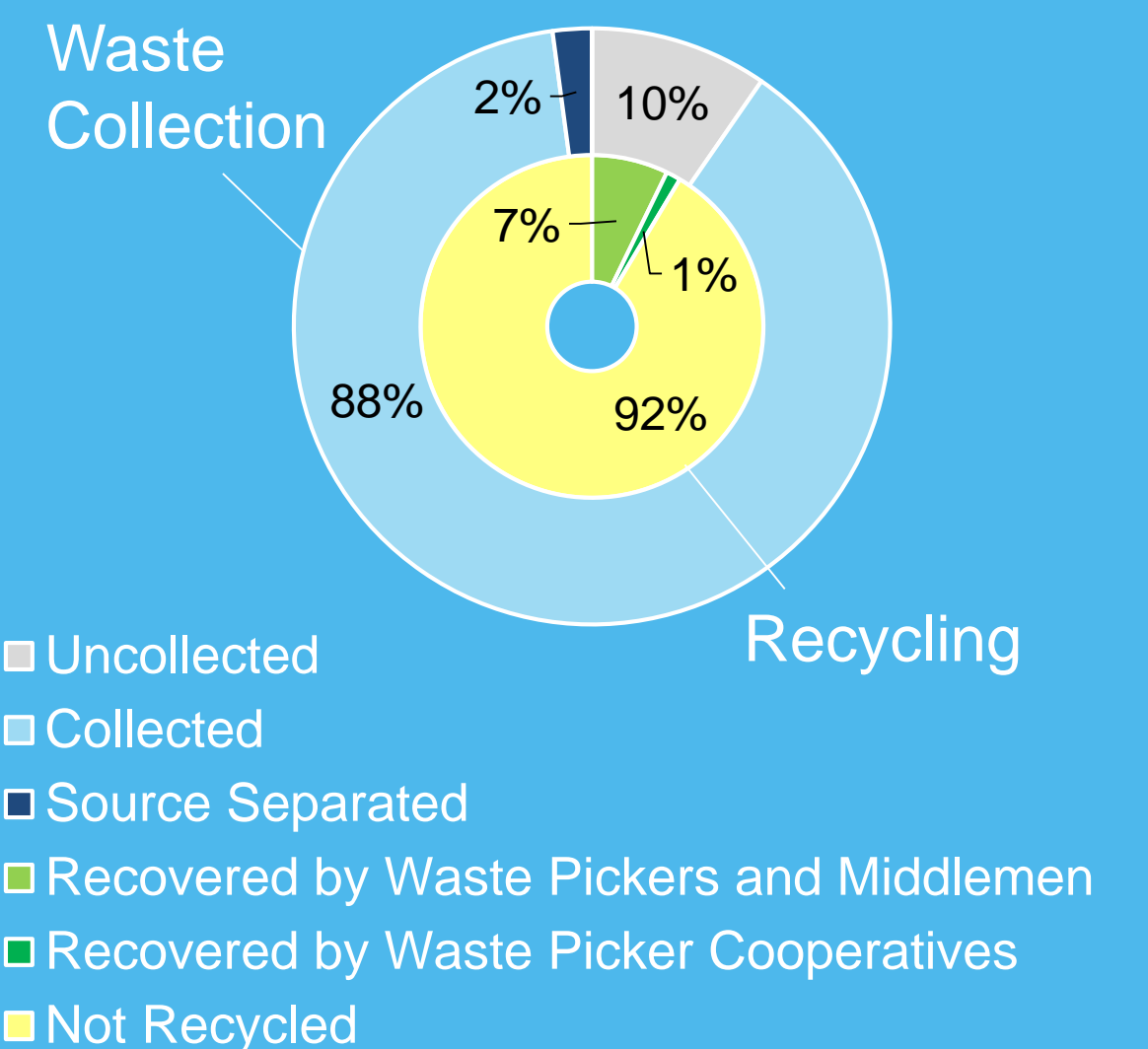
- Waste pickers perform critical role in recovering resources from waste and delivering a circular economy.
- Activities provide employment and livelihood for large numbers of marginalized people, whilst recycling rates are sometimes comparable to developed countries.
- However, despite clear benefits and world-leading policy efforts, it is not common for waste pickers to be formally included in delivery of SWM services in Brazil.

AIM

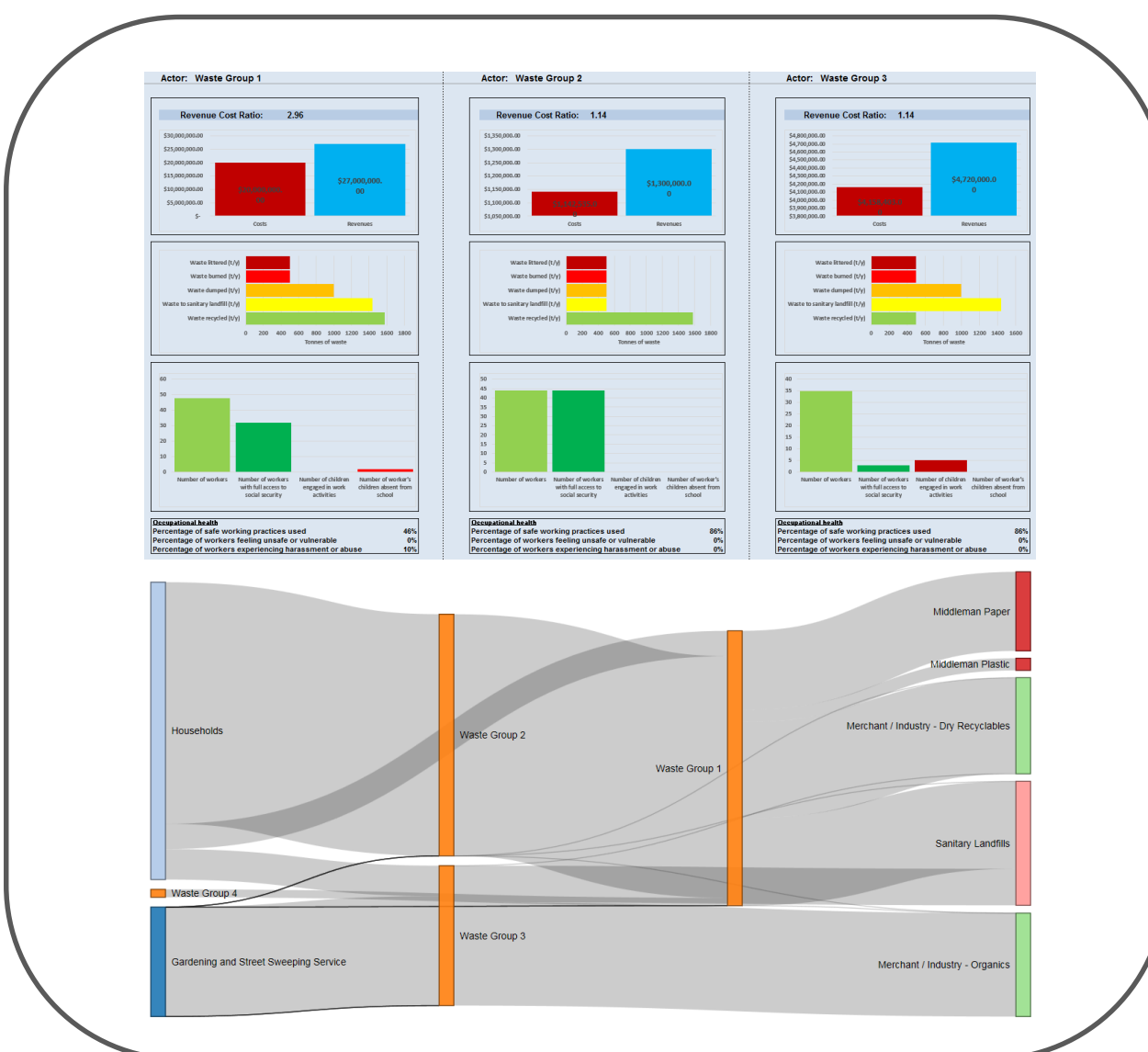
- Develop methodological tool and training package to more objectively quantify and elaborate potential impacts and benefits of selective waste collection and recycling services, including those operated by waste pickers.
- Package methodology in an easy-to-use spreadsheet tool, freely available online.

WASTE MANAGEMENT IN BRAZIL

Source separation and recovery



Of estimated 800,000 waste pickers in Brazil, only 1 in 10 are organised into cooperative groups, despite relatively improved employment security and working conditions with such arrangements.



DELIVERABLES

- SoCo Excel Tool developed to analyse: financial, local environmental pollution, greenhouse gas emissions, employment quality, and social aspects of solid waste management (SWM) systems using 45 indicators.
- SoCo methodology applied and tested in two Brazilian case study cities: Itauna in Minas Gerais, and Campinas in São Paulo.

CASE STUDY

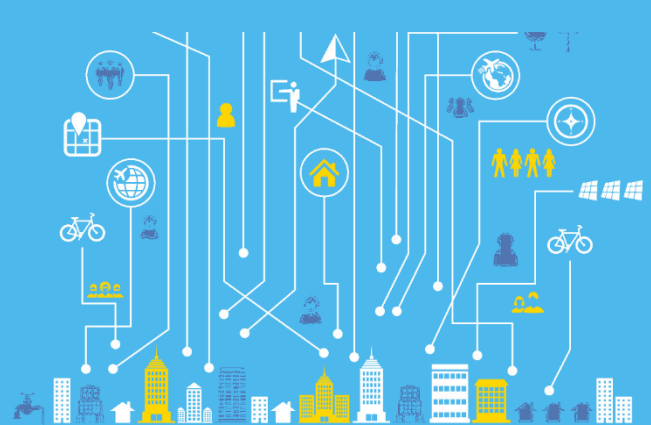
Itauna, Minas Gerais

- Selective waste collection carried out by waste picker cooperative group COOPERT, under contract with municipality.
- In 2015, COOPERT commercialised 4,129 tonnes of material.
- Each of the 72 members of COOPERT receives a monthly salary of £647.



OUTCOMES

- Training sessions on SoCo methodology delivered to more than 70 municipality managers.
- SoCo methodology applied and tested, bringing together key stakeholders in waste management in two cities.
- Excel spreadsheet tool and user guide to be hosted online, freely available for anyone to use.



RESILIENT
SUSTAINABLE
SOCIETIES &
INFRASTRUCTURE

Cities

Contact: Dr Costas Velis c.velis@leeds.ac.uk

SoCo Team (alphabetical order)

Innes Deans, Jefferson Dionísio, David Lerpiniere, Heather Purhouse, D.Sc Jacqueline Rutkowski, Dr Emilia Rutkowski, América Soares, Dr Costas Velis

Photos kindly provided by INSEA

March 2017

FUNDING



INSTITUTIONAL
LINKS



PROJECT PARTNERS